

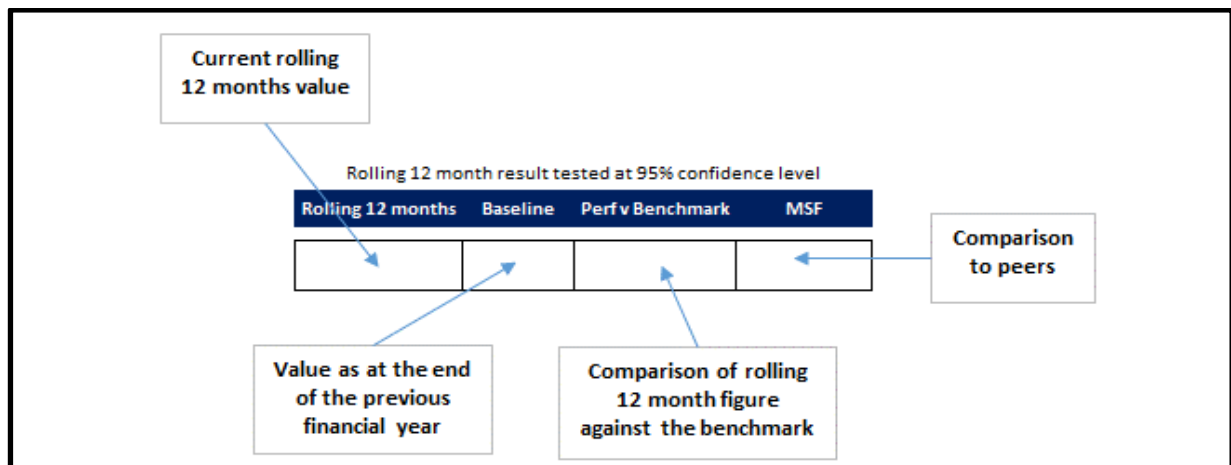
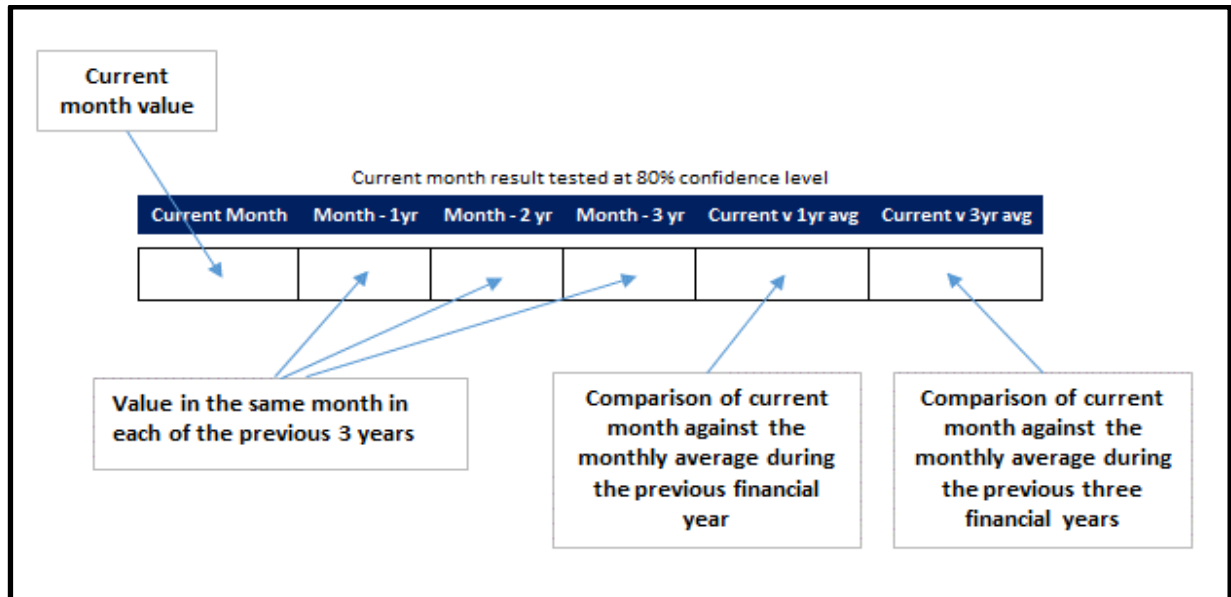
Cambridgeshire Constabulary

Police and Crime Commissioner Performance Update

December 2016

	Page
Notes	3
Police and Crime Plan Dashboard	4
Police and Crime Plan Indicators	
Maintain Local Police Performance	5-7
Continue to tackle Crime and Disorder	8-13
Keeping People Safe	14-16
Maintain the resilience of protective services	17
Organisational Health	18
Arrests	19
Stop Searches	20
Information sheet	21

DASHBOARD EXPLANATION



Note: where a cell has been highlighted in grey, this indicates a significant change

MOST SIMILAR FORCES

- Avon and Somerset
- Devon and Cornwall
- Gloucestershire
- Staffordshire
- Thames Valley
- Warwickshire
- Wiltshire

NOT PROTECTIVELY MARKED

POLICE AND CRIME PLAN DASHBOARD

Current month result tested at 80% confidence level

Rolling 12 month result tested at 95% confidence level

Maintain Local Police Performance	Current Month	Dec-15	Dec-14	Dec-13	Current v 1yr avg	Current v 3yr avg	Rolling 12 months	Baseline	Perf v Benchmark	MSF
Dealing with Local Concerns	82.2%	75.3%	73.8%	71.7%	Higher	Higher	74.1%	74.3%	Comparable	Comparable
Satisfaction with Service Delivery	82.4%	87.2%	87.2%	89.0%	Lower	Lower	86.7%	86.4%	Comparable	Higher
Special Constabulary - N ^o of Officers	244	253	276	283	-	-	244	280	Below target	-
Special Constabulary - N ^o of Hours worked	4,120	3,981	6,117	4,359	Lower	Lower	58,665	66,095	Lower	-
999 calls answered within 10 seconds	93.8%	95.0%	94.3%	97.0%	Comparable	Comparable	95.0%	95.1%	Comparable	-
Non-emergency calls answered within 30 seconds*	93.6%	95.2%	95.7%	95.7%	Comparable	Comparable	94.0%	94.2%	Comparable	-

Continue to tackle Crime and Disorder	Current Month	Dec-15	Dec-14	Dec-13	Current v 1yr avg	Current v 3yr avg	Rolling 12 months	Baseline	Perf v Benchmark	MSF
All Recorded Crime	4,948	4,073	3,555	3,689	Higher	Higher	54,325	48,642	Higher	Higher
Victim-Based Crime	4,338	3,678	3,150	3,315	Higher	Higher	48,355	43,935	Higher	Higher
Perception of high ASB	0.4%	0.3%	1.2%	0.0%	Comparable	Comparable	0.9%	0.8%	Comparable	Lower
Anti-social behaviour	1,755	1,584	1,540	1,742	Comparable	Comparable	24,652	22,613	Higher	-
All Crime Prosecution Possible Outcome Rate	16.0%	20.1%	27.7%	29.5%	Lower	Lower	20.9%	20.4%	Comparable	Comparable
Satisfaction with Service Delivery - Burglary Dwelling	84.4%	86.7%	97.8%	95.6%	Lower	Lower	91.3%	91.8%	Comparable	Comparable
Burglary Dwelling	200	232	219	284	Comparable	Comparable	2,110	2,366	Lower	Comparable
Burglary Dwelling Prosecution Possible Outcome Rate	4.5%	9.9%	23.7%	11.6%	Lower	Lower	12.6%	10.4%	Higher	Comparable
Asset Recovery (data currently unavailable)										
Harm caused by all known OCGs operating in Cambs**	71.3	67.1	-	-	Comparable	-	1,284	968	Higher	-
Harm caused by cohort of OCGs identified at year end**	50.4	n/a	n/a	n/a	Lower	n/a	907	968	Lower	-
Perception of Drug Misuse	13.8%	11.8%	11.3%	6.1%	Higher	Higher	12.9%	11.4%	Higher	Lower

Keeping People Safe	Current Month	Dec-15	Dec-14	Dec-13	Current v 1yr avg	Current v 3yr avg	Rolling 12 months	Baseline	Perf v Benchmark	MSF
Ratio of DV Incidents to Prosecutions										
Outcome Rate for Domestic Abuse Crime	21.1%	28.1%	32.8%	42.7%	Lower	Lower	30.0%	31.1%	Comparable	-
IOM (% of people who reoffend within 12 months)										
IOM (N ^o of people who commit offences on the scheme)										
Hate Crime Prosecution Possible Outcome Rate	16.5%	17.5%	17.5%	37.0%	Lower	Lower	25.4%	28.2%	Lower	-
Satisfaction with Service Delivery - Hate Incidents	75.0%	87.5%	100.0%	75.0%	Comparable	Comparable	72.6%	85.4%	Lower	Comparable

Maintain the resilience of protective services	Jun-16	Jun-15	Jun-14	Jun-13	Current v 1yr avg	Current v 3yr avg	Rolling 12 months	Baseline	Perf v Benchmark	MSF
Reduce KSI Road Casualties	36	29	39	28	Comparable	Comparable	364	360	Comparable	Comparable

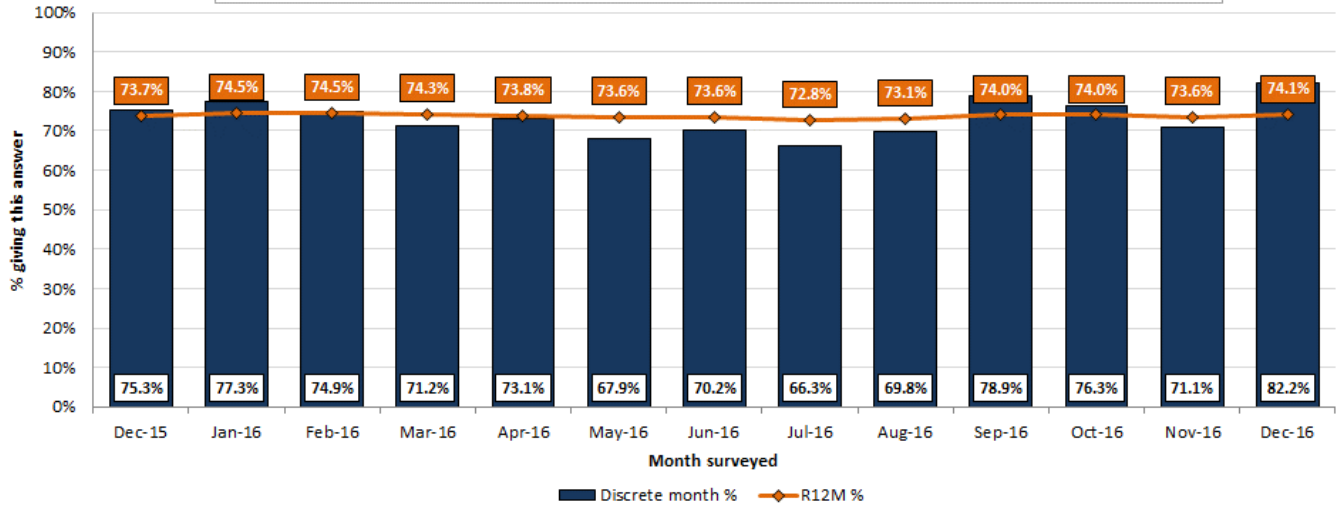
Organisational Health	Current Month	Dec-15	Dec-14	Dec-13	Current v 1yr avg	Current v 3yr avg	Rolling 12 months	Baseline	Perf v Benchmark	MSF
Sickness - Police Officer	0.9	0.7	0.6	0.6	Higher	Higher	9.4	7.6		Below national average
Sickness - Police Staff	0.9	1.1	1.0	0.6	Comparable	Higher	10.0	10.9		Above national average

MAINTAIN LOCAL POLICE PERFORMANCE

Current Month	Dec-15	Dec-14	Dec-13	Current v 1yr avg	Current v 3yr avg	Rolling 12 months	Baseline	Perf v Benchmark	MSF
82.2%	75.3%	73.8%	71.7%	Higher	Higher	74.1%	74.3%	Comparable	Comparable

Percentage of respondents who agree that Cambridgeshire Police are dealing with the things that matter to people in their community

LOCAL CONFIDENCE

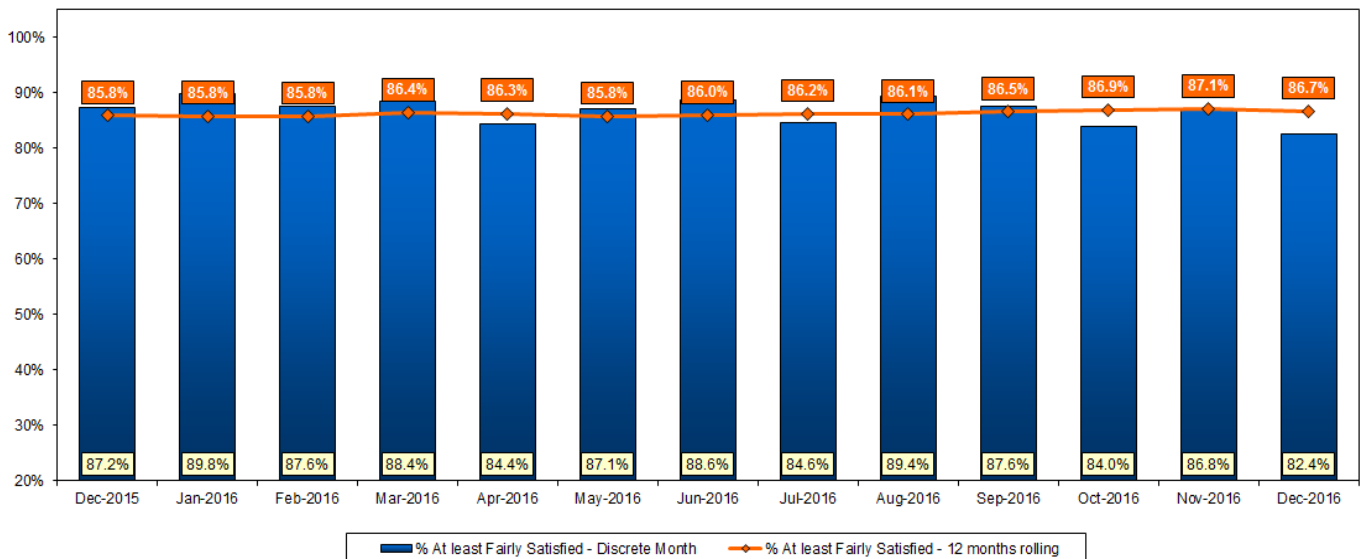


Policing in Cambridgeshire Survey data to December 2016

Current Month	Dec-15	Dec-14	Dec-13	Current v 1yr avg	Current v 3yr avg	Rolling 12 months	Baseline	Perf v Benchmark	MSF
82.4%	87.2%	87.2%	89.0%	Lower	Lower	86.7%	86.4%	Comparable	Higher

Constabulary; % at least Fairly Satisfied with Whole Experience; showing 12 months rolling and discrete month data for All Categories (excl Hate) over time

SATISFACTION



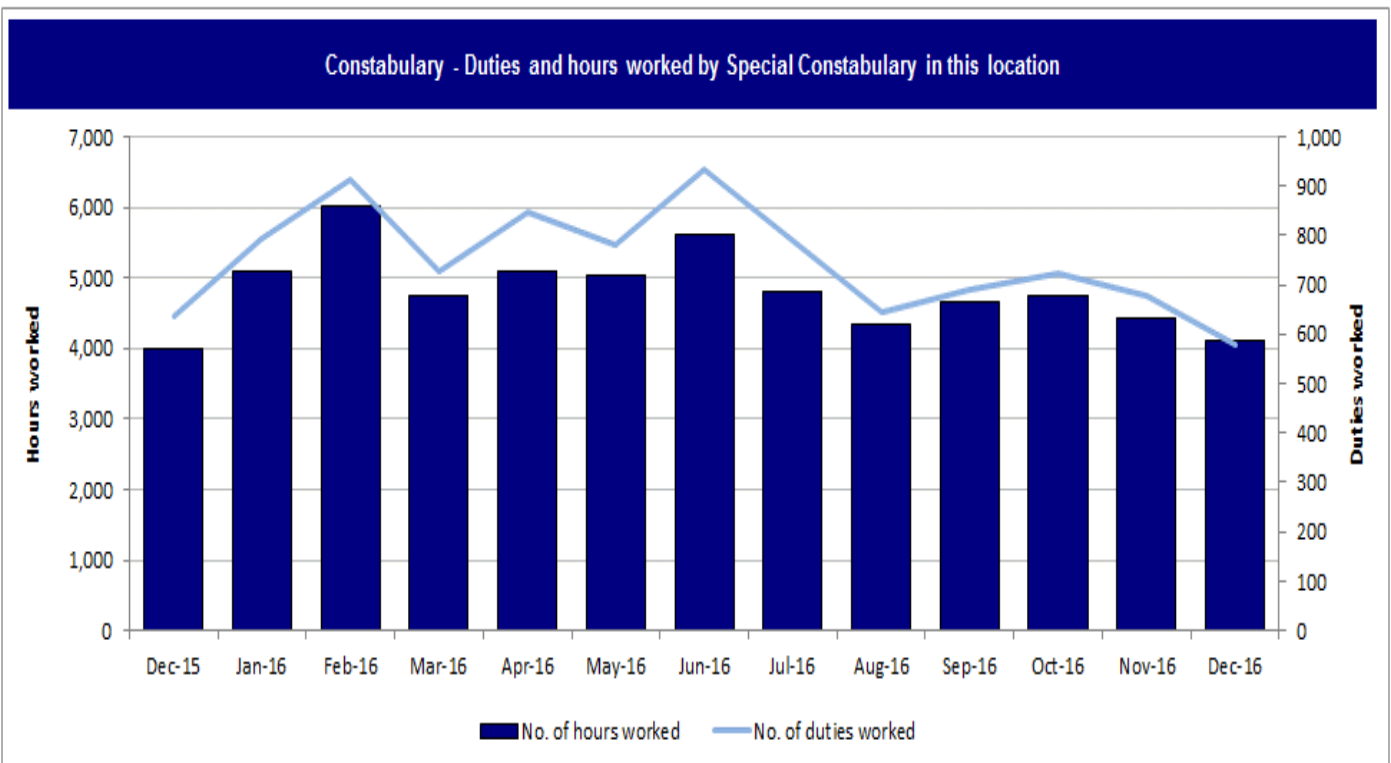
Policing in Cambridgeshire Survey data to December 2016

SPECIAL CONSTABULARY

Current Month	Dec-15	Dec-14	Dec-13	Current v 1yr avg	Current v 3yr avg	Rolling 12 months	Baseline	Perf v Benchmark	MSF
244	253	276	283	-	-	244	280	Below target	-

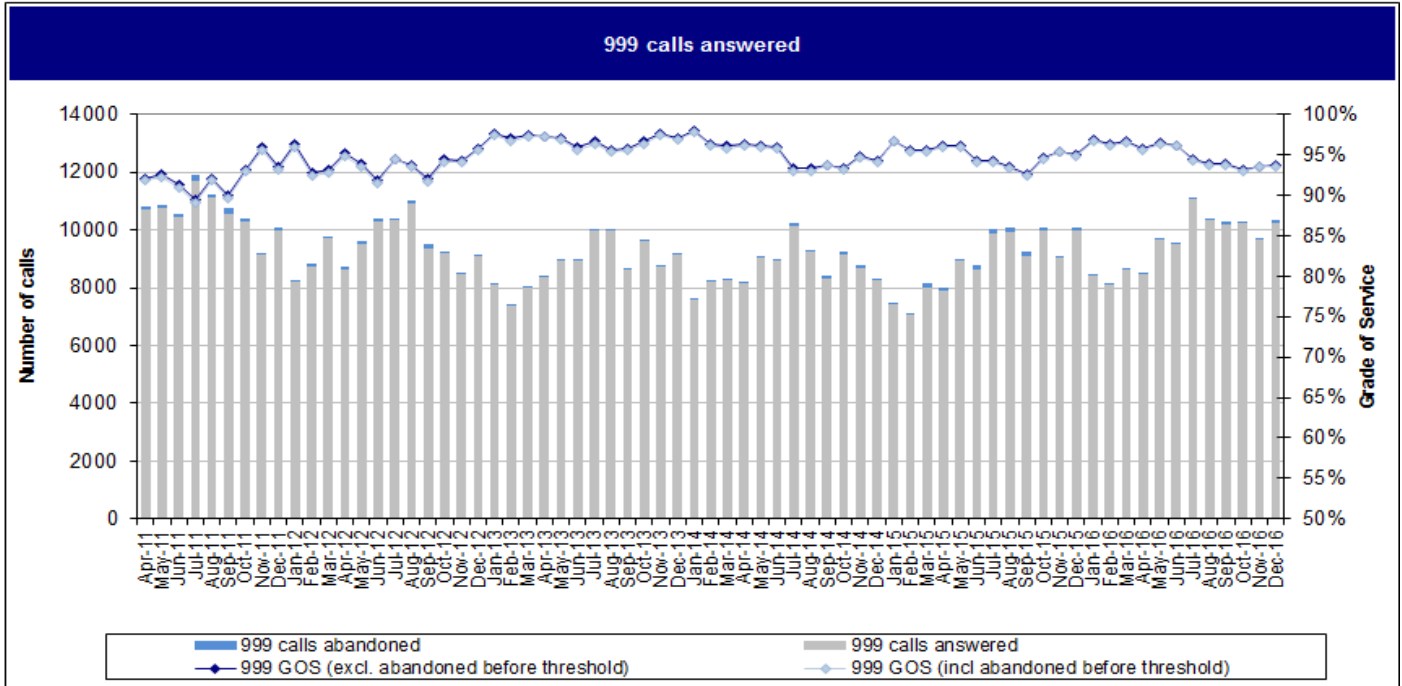


Current Month	Dec-15	Dec-14	Dec-13	Current v 1yr avg	Current v 3yr avg	Rolling 12 months	Baseline	Perf v Benchmark	MSF
4,120	3,981	6,117	4,359	Lower	Lower	58,665	66,095	Lower	-

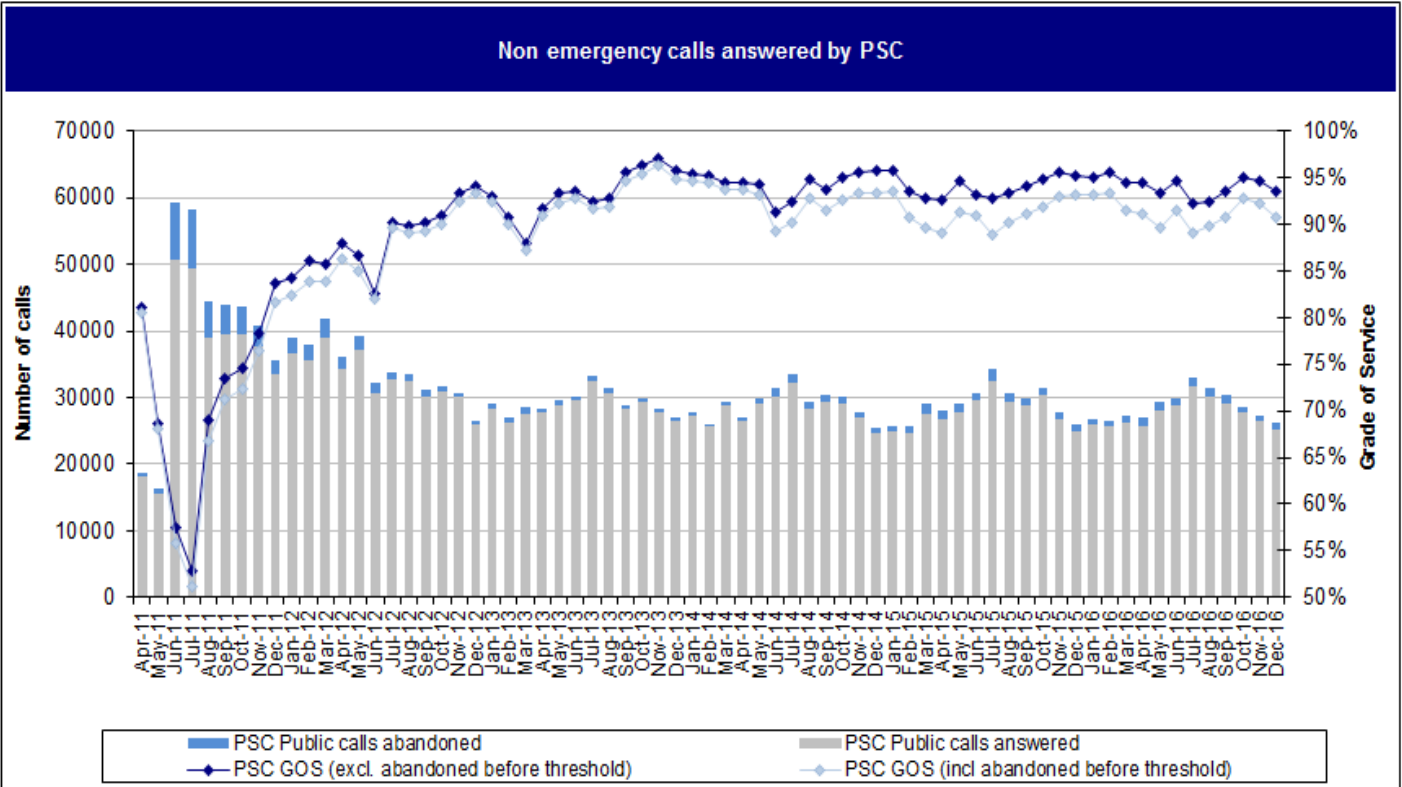


CALL HANDLING

Current Month	Dec-15	Dec-14	Dec-13	Current v 1yr avg	Current v 3yr avg	Rolling 12 months	Baseline	Perf v Benchmark	MSF
93.8%	95.0%	94.3%	97.0%	Comparable	Comparable	95.0%	95.1%	Comparable	-



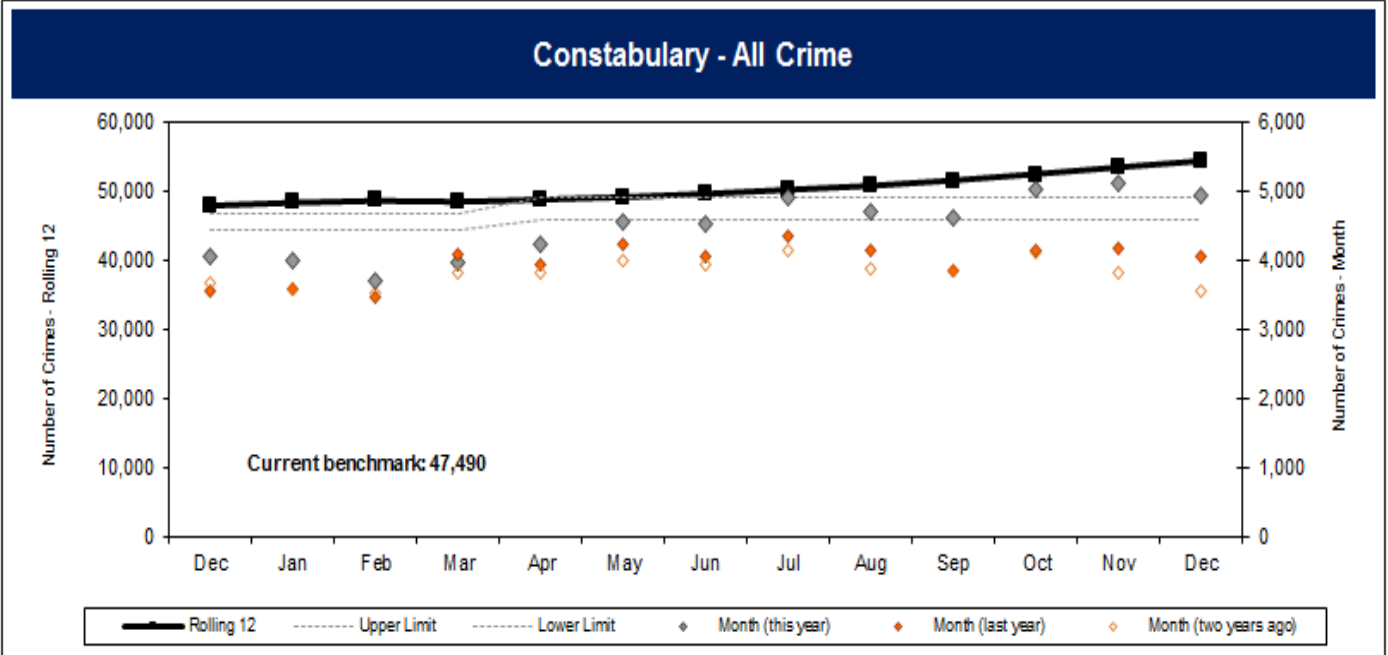
Current Month	Dec-15	Dec-14	Dec-13	Current v 1yr avg	Current v 3yr avg	Rolling 12 months	Baseline	Perf v Benchmark	MSF
93.6%	95.2%	95.7%	95.7%	Comparable	Comparable	94.0%	94.2%	Comparable	-



CONTINUE TO TACKLE CRIME AND DISORDER

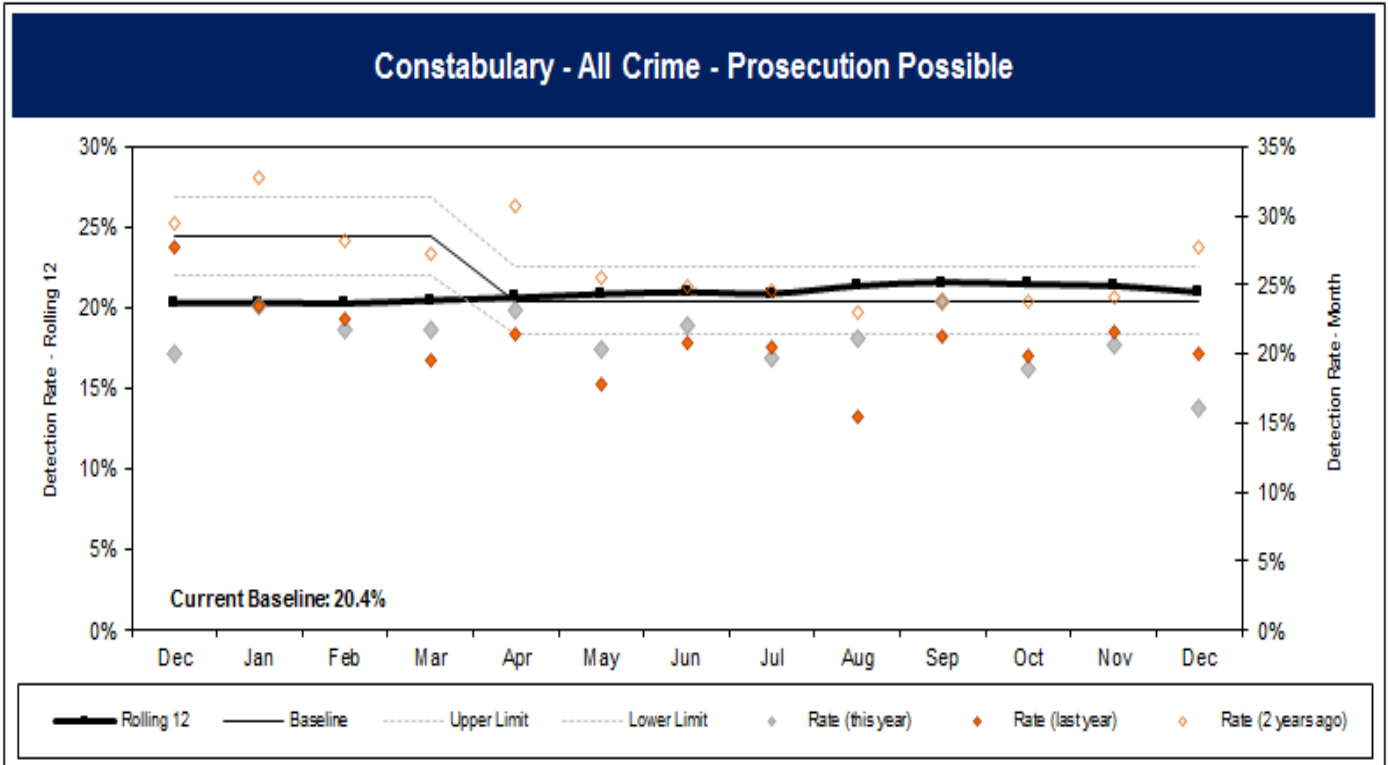
Current Month	Dec-15	Dec-14	Dec-13	Current v 1yr avg	Current v 3yr avg
4,948	4,073	3,555	3,689	Higher	Higher

Rolling 12 months	Baseline	Perf v Benchmark	MSF
54,325	48,642	Higher	Comparable



Current Month	Dec-15	Dec-14	Dec-13	Current v 1yr avg	Current v 3yr avg
16.0%	20.1%	27.7%	29.5%	Lower	Lower

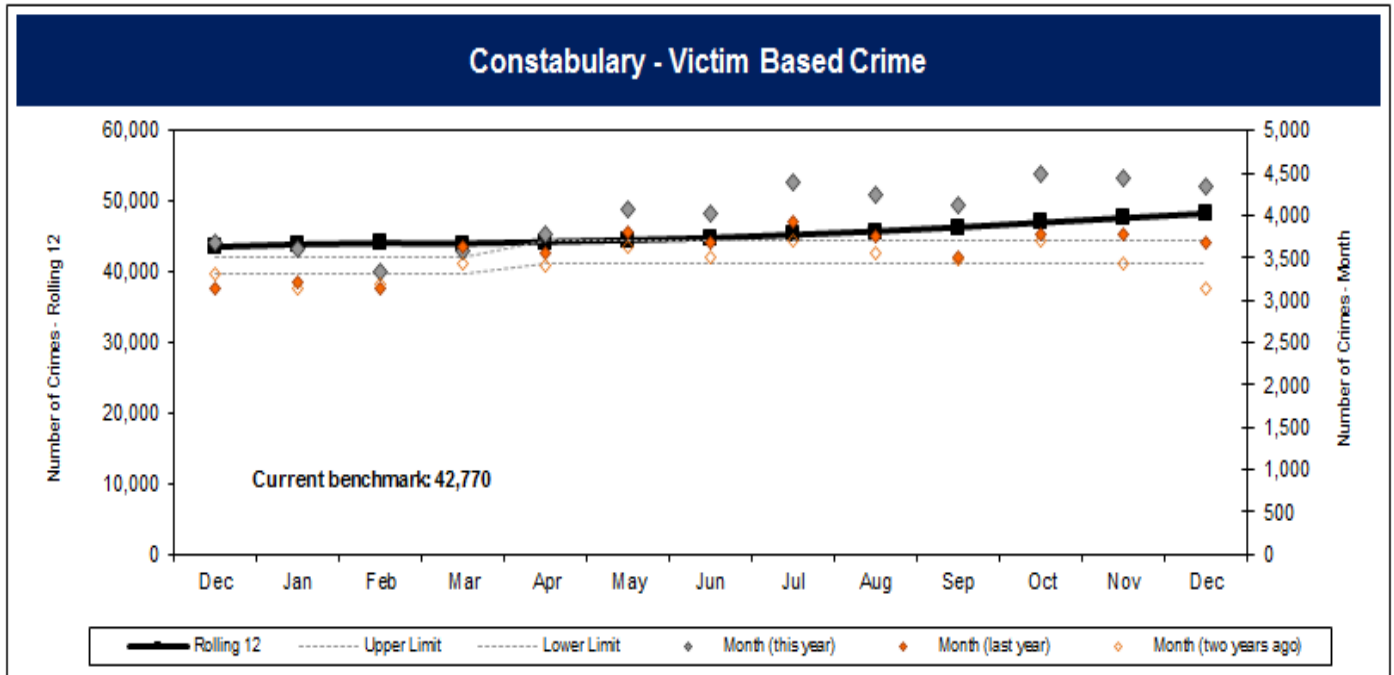
Rolling 12 months	Baseline	Perf v Benchmark	MSF
20.9%	20.4%	Comparable	Comparable



NOT PROTECTIVELY MARKED

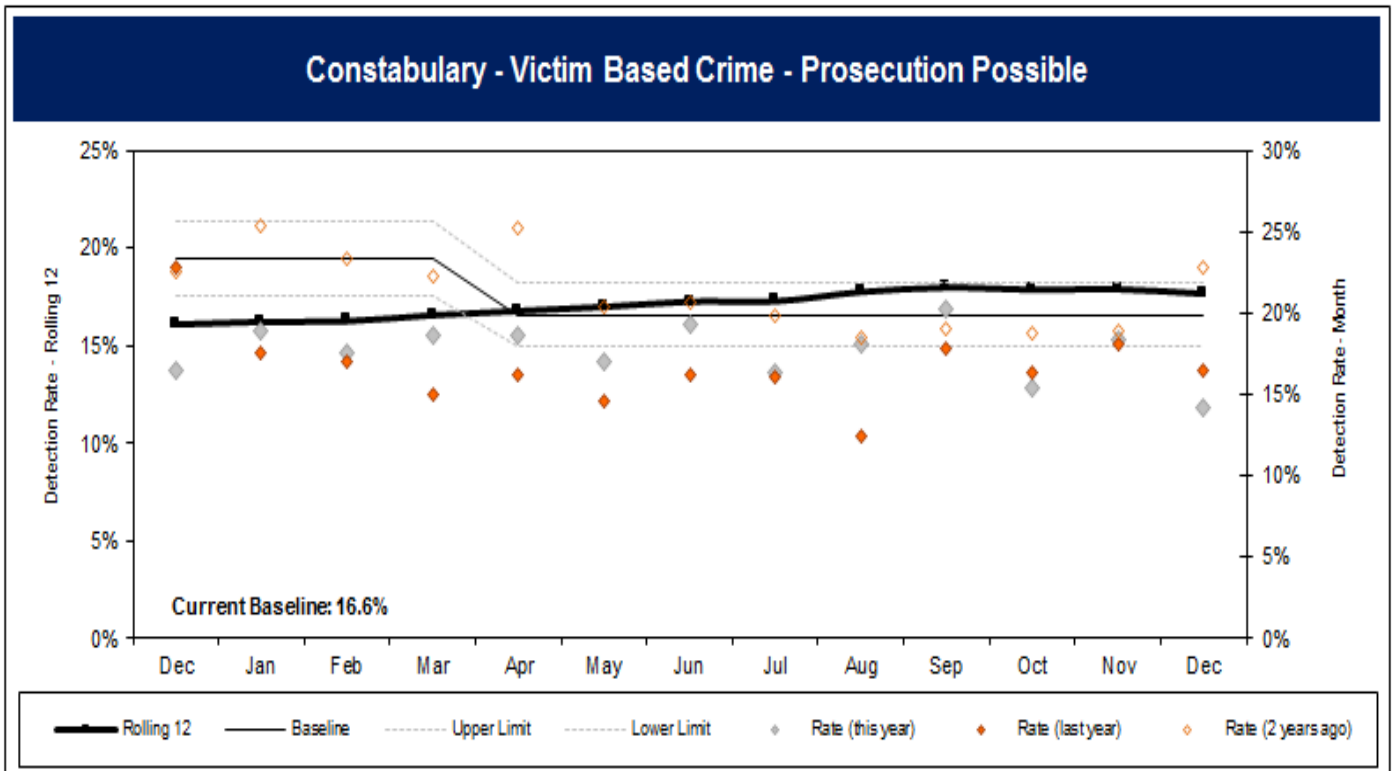
Current Month	Dec-15	Dec-14	Dec-13	Current v 1yr avg	Current v 3yr avg
4,338	3,678	3,150	3,315	Higher	Higher

Rolling 12 months	Baseline	Perf v Benchmark	MSF
48,355	43,935	Higher	Comparable



Current Month	Dec-15	Dec-14	Dec-13	Current v 1yr avg	Current v 3yr avg
14.2%	16.4%	22.8%	22.6%	Lower	Lower

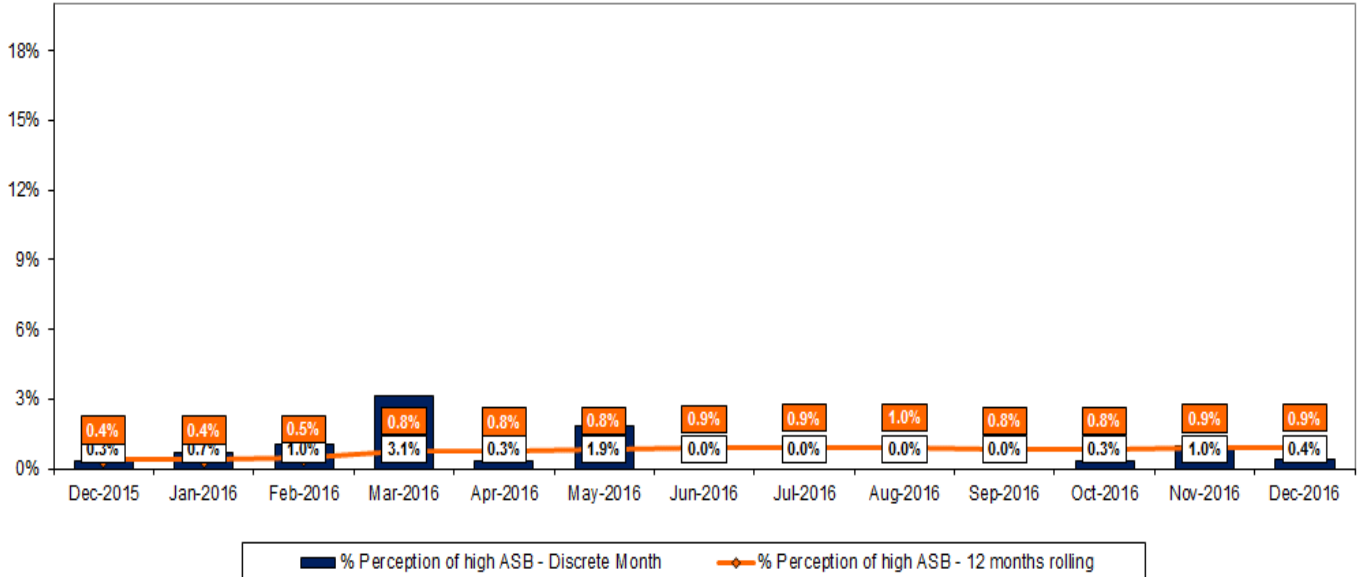
Rolling 12 months	Baseline	Perf v Benchmark	MSF
17.7%	16.6%	Comparable	-



NOT PROTECTIVELY MARKED

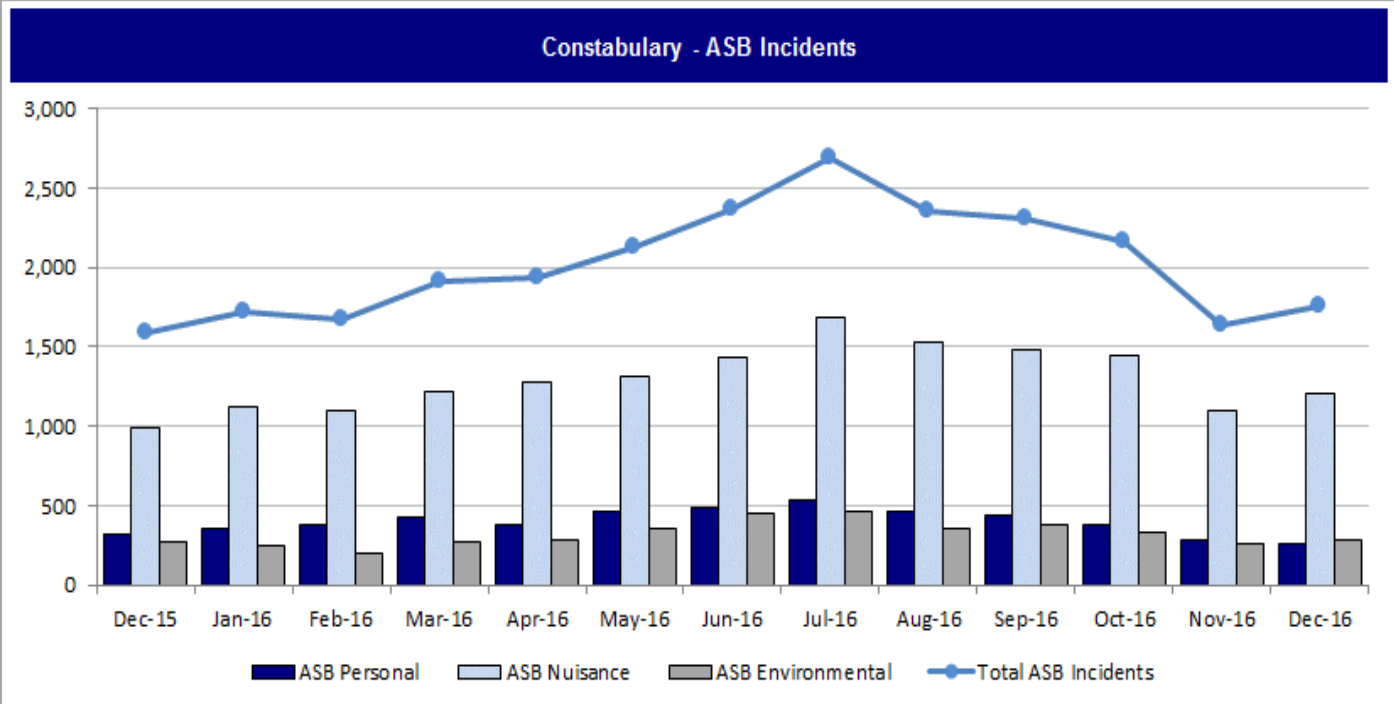
Current Month	Dec-15	Dec-14	Dec-13	Current v 1yr avg	Current v 3yr avg	Rolling 12 months	Baseline	Perf v Benchmark	MSF
0.4%	0.3%	1.2%	0.0%	Comparable	Comparable	0.9%	0.8%	Comparable	Lower

Constabulary; % of respondents who perceive that there is a high level of ASB in their area; showing 12 months rolling and discrete month data over time



Policing in Cambridgeshire Survey data to December 2016

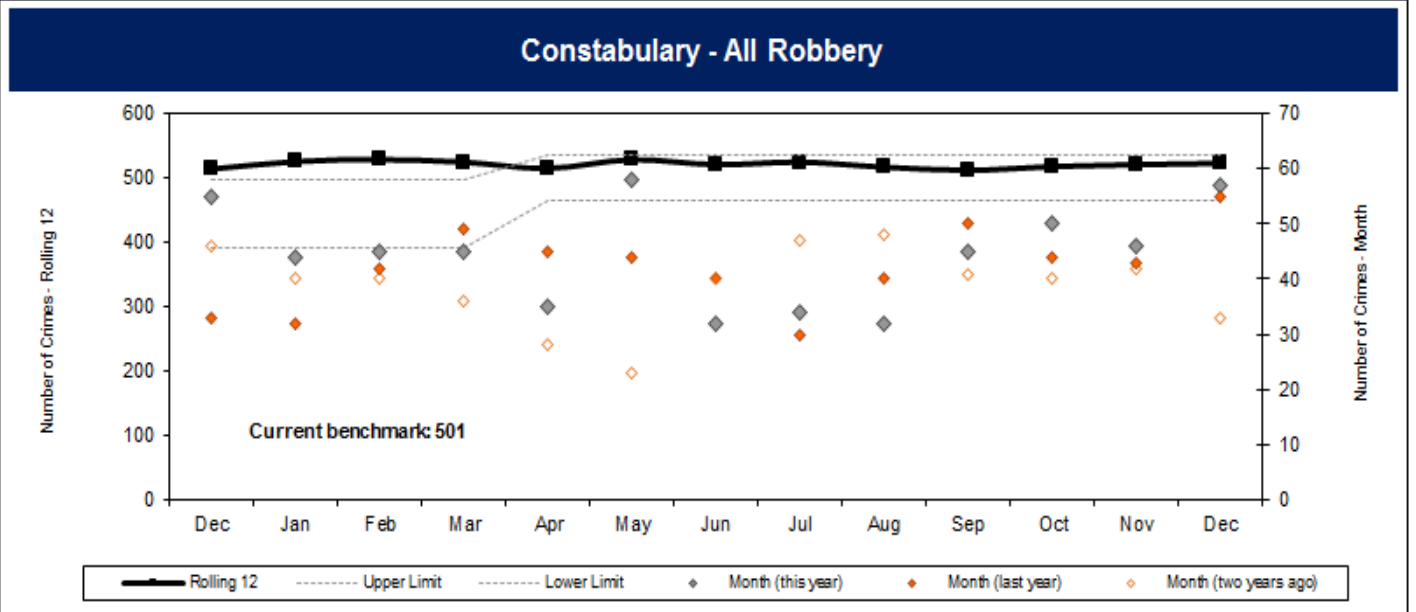
Current Month	Dec-15	Dec-14	Dec-13	Current v 1yr avg	Current v 3yr avg	Rolling 12 months	Baseline	Perf v Benchmark	MSF
1,755	1,584	1,540	1,742	Comparable	Comparable	24,652	22,613	Higher	-



NOT PROTECTIVELY MARKED

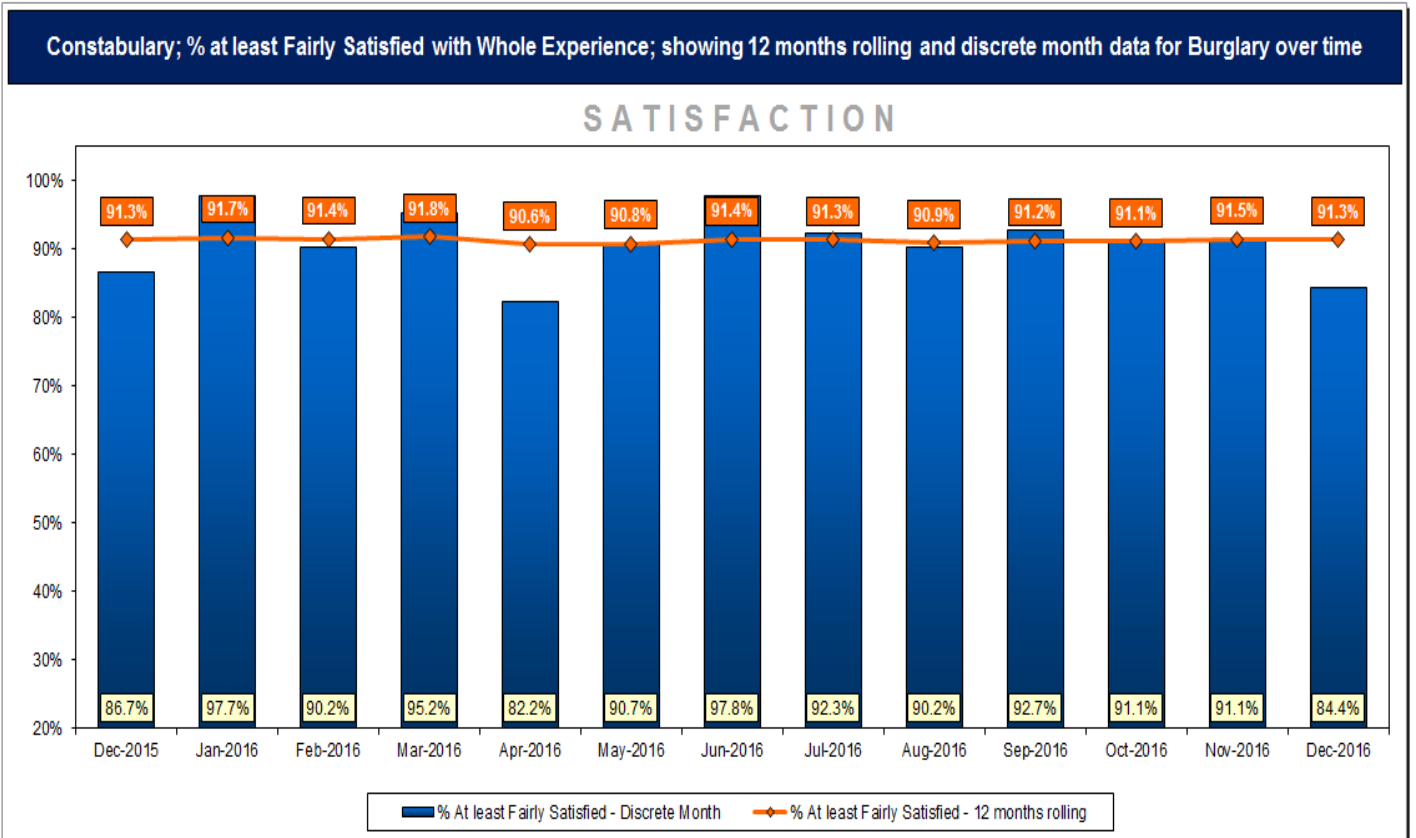
Current Month	Dec-15	Dec-14	Dec-13	Current v 1yr avg	Current v 3yr avg
57	55	33	46	Higher	Higher

Rolling 12 months	Baseline	Perf v Benchmark	MSF
523	525	Comparable	-



Current Month	Dec-15	Dec-14	Dec-13	Current v 1yr avg	Current v 3yr avg
84.4%	86.7%	97.8%	95.6%	Lower	Lower

Rolling 12 months	Baseline	Perf v Benchmark	MSF
91.3%	91.8%	Comparable	Comparable



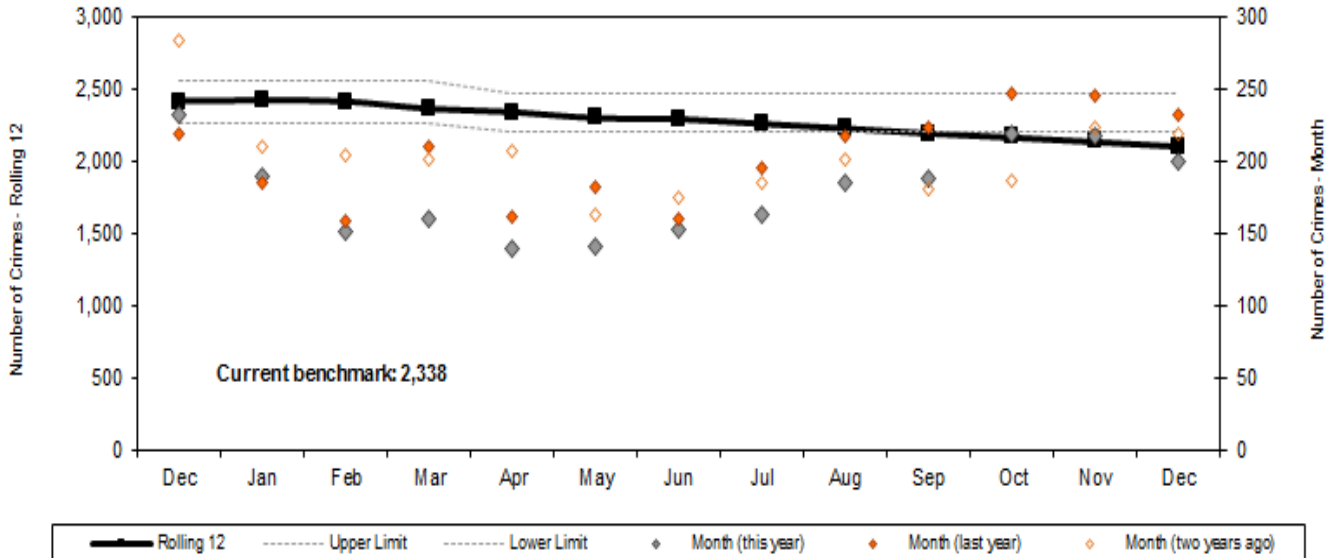
Victim Satisfaction Survey data to December 2016

NOT PROTECTIVELY MARKED

Current Month	Dec-15	Dec-14	Dec-13	Current v 1yr avg	Current v 3yr avg
200	232	219	284	Comparable	Comparable

Rolling 12 months	Baseline	Perf v Benchmark	MSF
2,110	2,366	Lower	Comparable

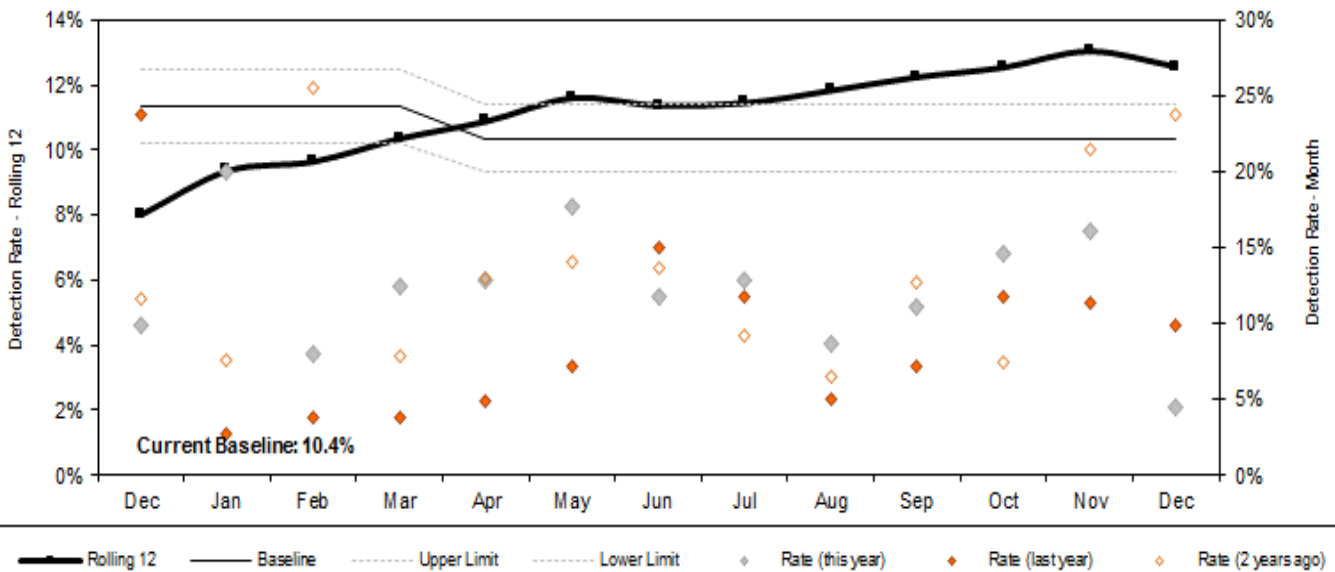
Constabulary - Burglary Dwelling



Current Month	Dec-15	Dec-14	Dec-13	Current v 1yr avg	Current v 3yr avg
4.5%	9.9%	23.7%	11.6%	Lower	Lower

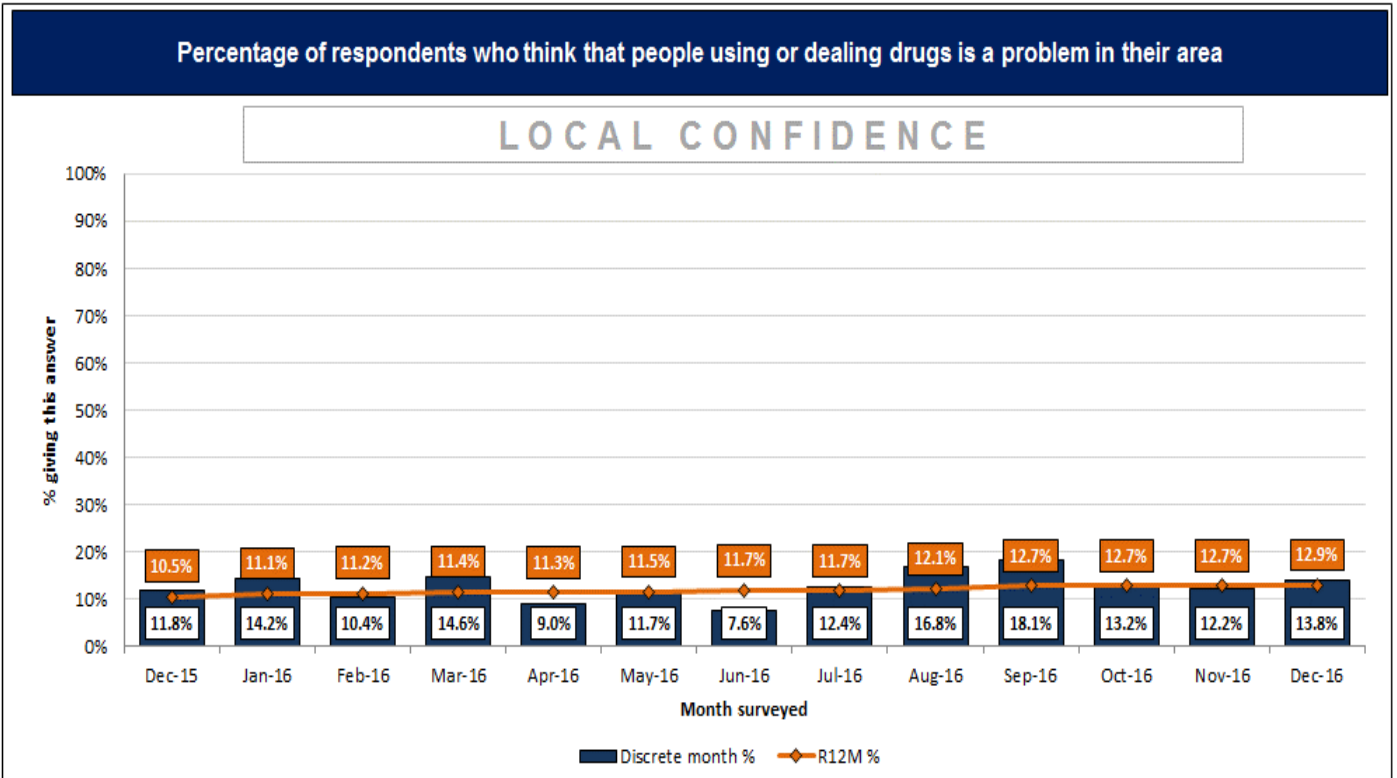
Rolling 12 months	Baseline	Perf v Benchmark	MSF
12.6%	10.4%	Higher	Comparable

Constabulary - Burglary Dwelling - Prosecution Possible



NOT PROTECTIVELY MARKED

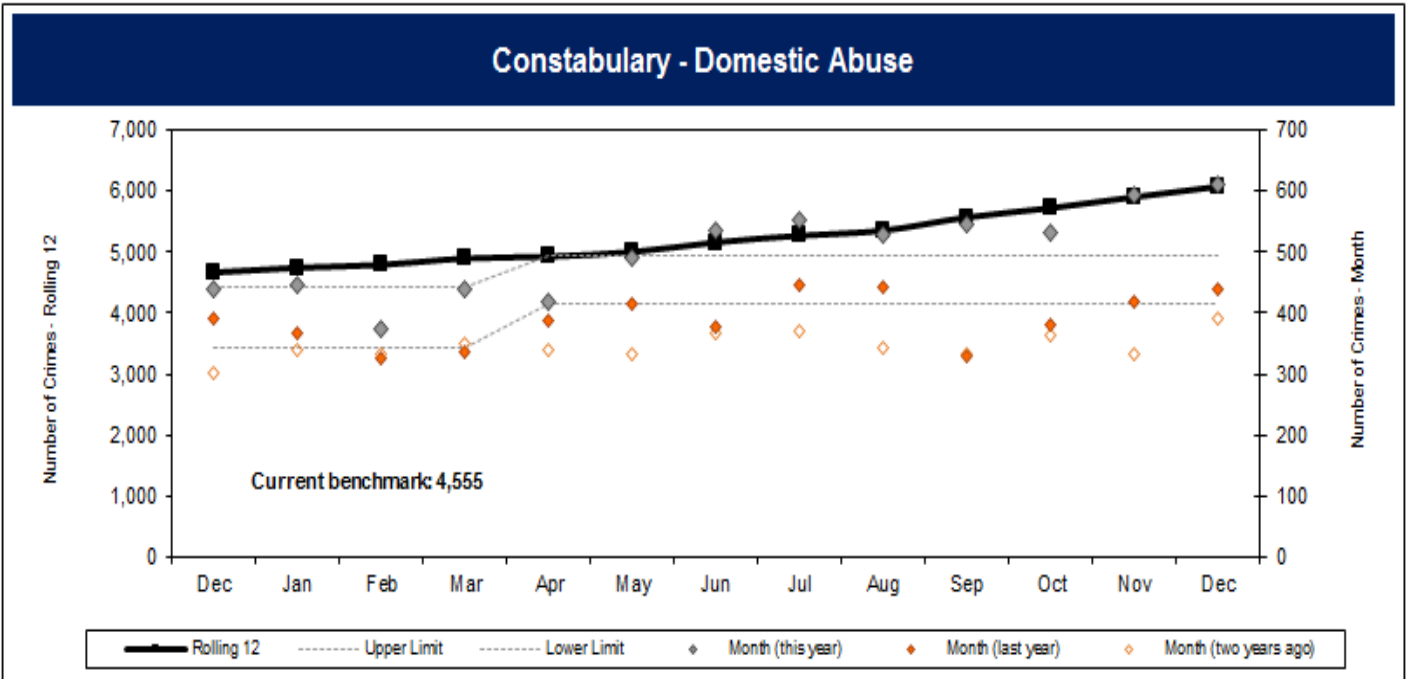
Current Month	Dec-15	Dec-14	Dec-13	Current v 1yr avg	Current v 3yr avg	Rolling 12 months	Baseline	Perf v Benchmark	MSF
13.8%	11.8%	11.3%	6.1%	Higher	Higher	12.9%	11.4%	Higher	Lower



Policing in Cambridgeshire Survey data to December 2016

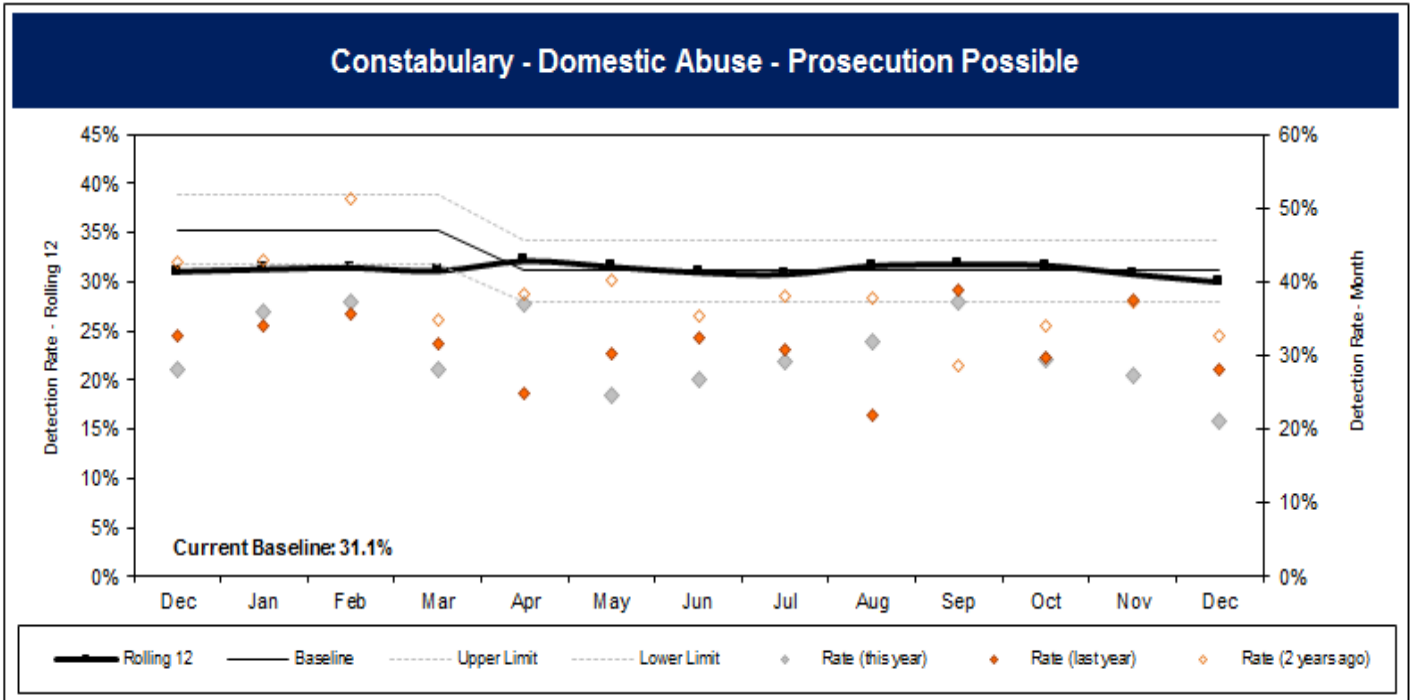
KEEPING PEOPLE SAFE

Current Month	Dec-15	Dec-14	Dec-13	Current v 1yr avg	Current v 3yr avg	Rolling 12 months	Baseline	Perf v Benchmark	MSF
611	441	390	302	Higher	Higher	6,067	4,901	Higher	-



As the Constabulary proactively encourages victims of Domestic Abuse to confidently seek our help, an increase in this offence type may not necessarily be a negative indicator.

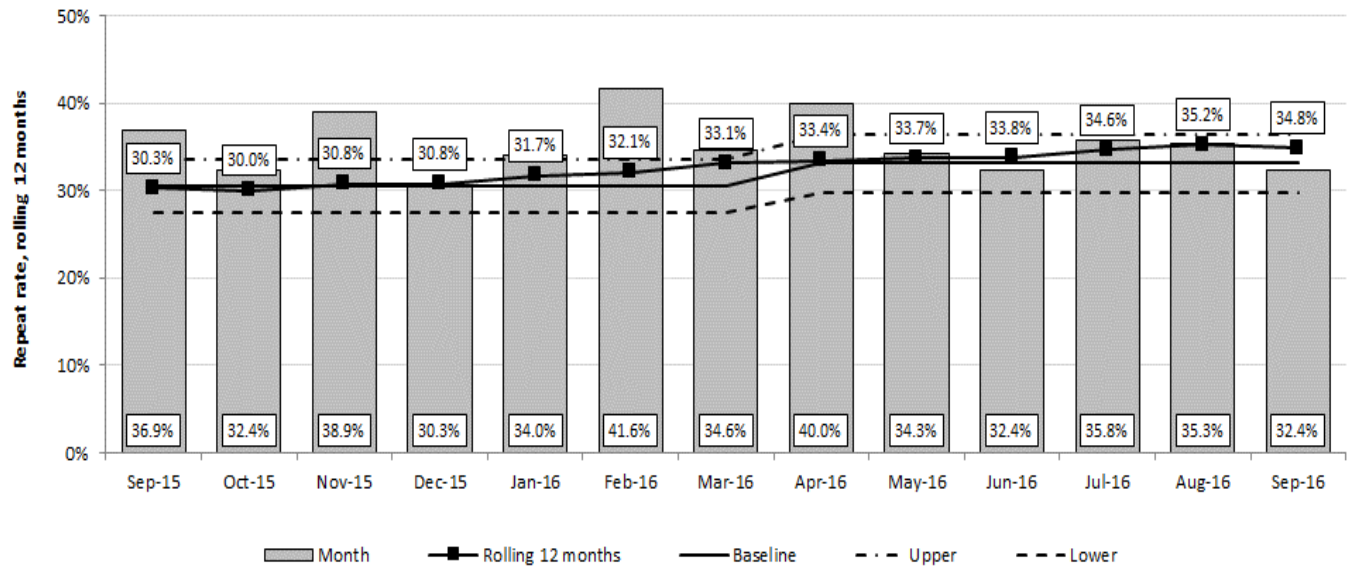
Current Month	Dec-15	Dec-14	Dec-13	Current v 1yr avg	Current v 3yr avg	Rolling 12 months	Baseline	Perf v Benchmark	MSF
21.1%	28.1%	32.8%	42.7%	Lower	Lower	30.0%	31.1%	Comparable	-



NOT PROTECTIVELY MARKED

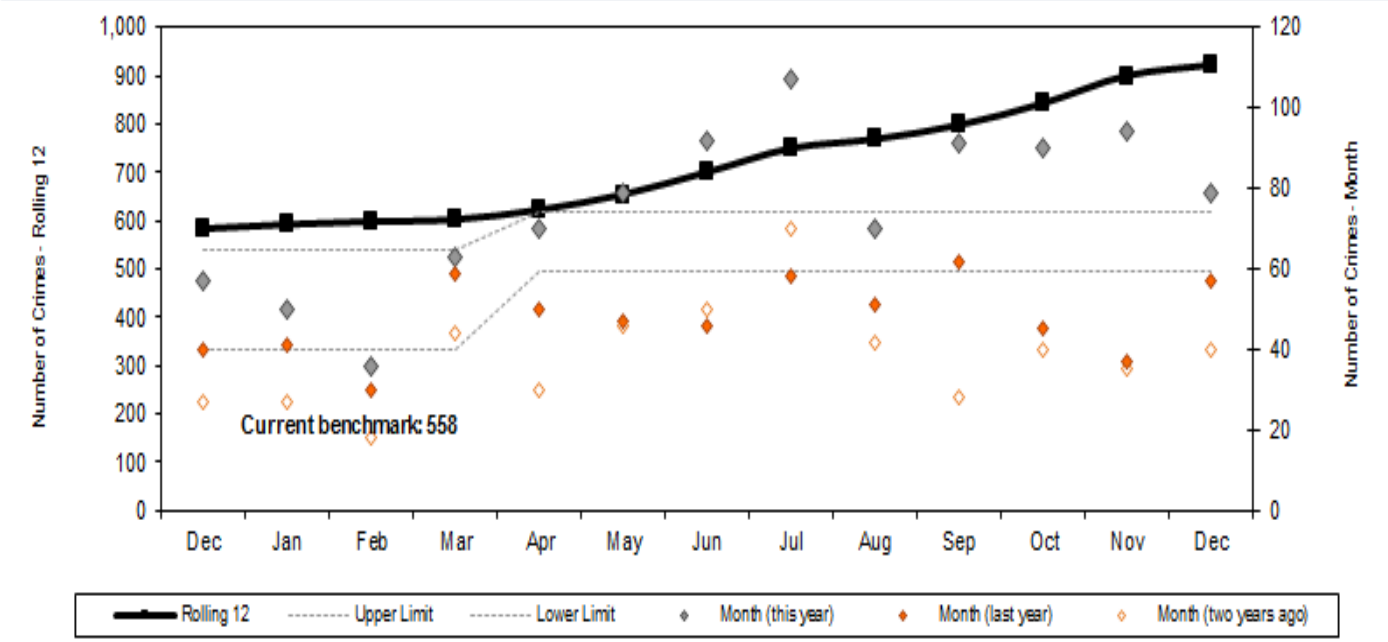
Sep-16	Sep-15	Sep-14	Sep-13	Current v 1yr avg	Current v 3yr avg	Rolling 12 months	Baseline	Perf v Benchmark	MSF
32.4%	36.9%	38.6%	44.7%	Comparable	Comparable	34.8%	33.1%	Comparable	-

Constabulary - Repeat incidents of Domestic Abuse reviewed at MARAC



Current Month	Dec-15	Dec-14	Dec-13	Current v 1yr avg	Current v 3yr avg	Rolling 12 months	Baseline	Perf v Benchmark	MSF
79	57	40	27	Higher	Higher	921	602	Higher	-

Constabulary - Hate Crime

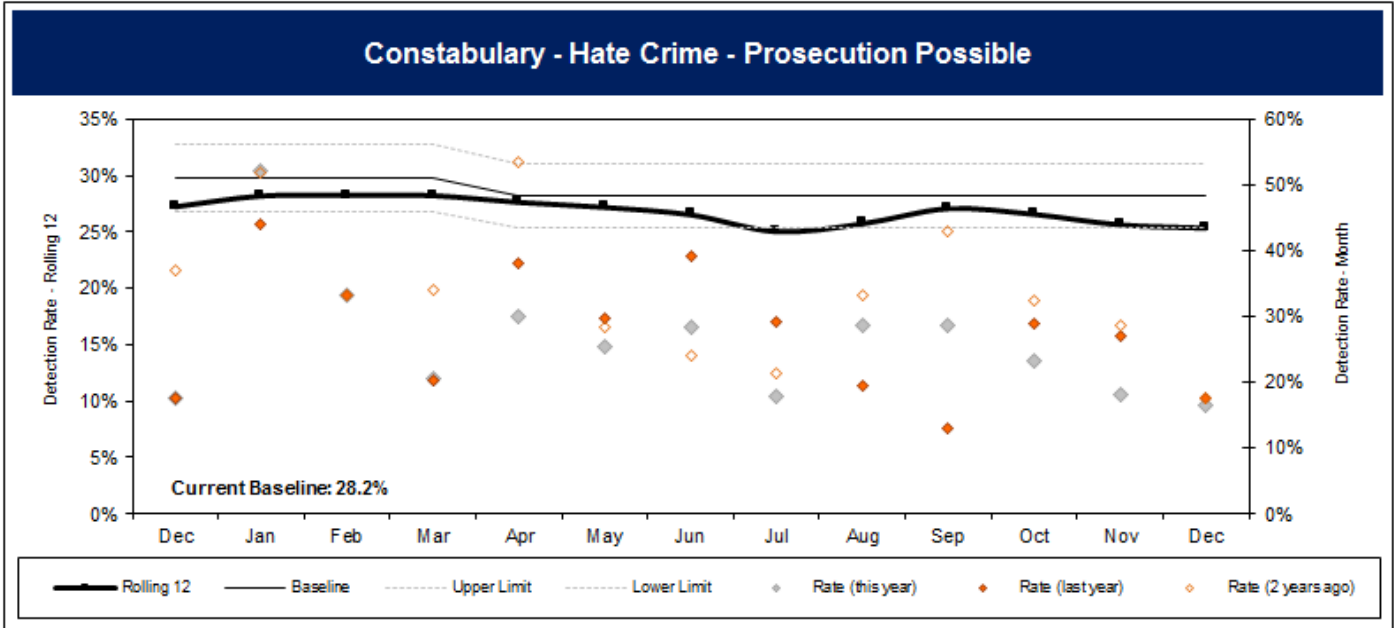


As the Constabulary proactively encourages victims of Hate Crime to confidently seek our help, an increase in this offence type may not necessarily be a negative indicator.

NOT PROTECTIVELY MARKED

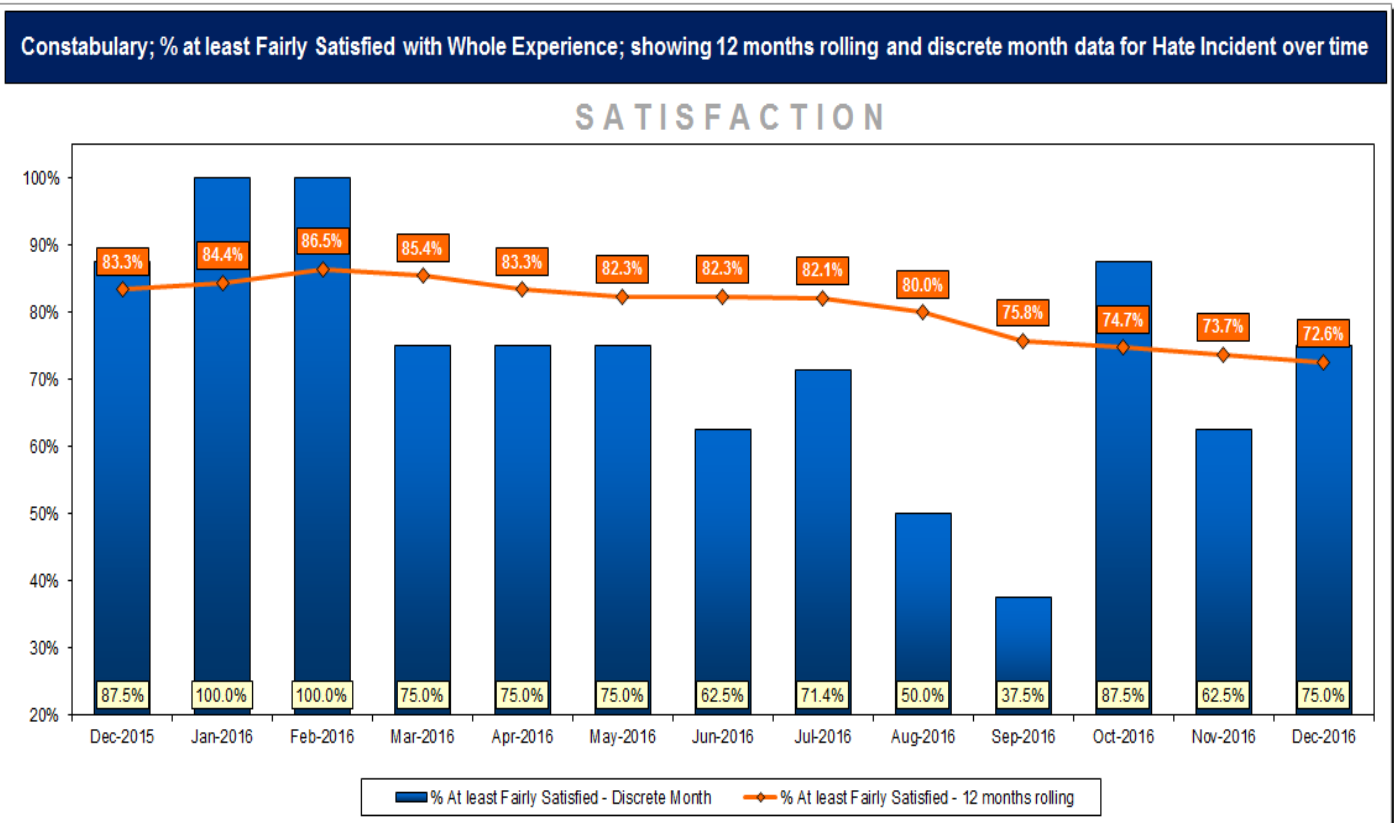
Current Month	Dec-15	Dec-14	Dec-13	Current v 1yr avg	Current v 3yr avg
16.5%	17.5%	17.5%	37.0%	Lower	Lower

Rolling 12 months	Baseline	Perf v Benchmark	MSF
25.4%	28.2%	Lower	-



Current Month	Dec-15	Dec-14	Dec-13	Current v 1yr avg	Current v 3yr avg
75.0%	87.5%	100.0%	75.0%	Comparable	Comparable

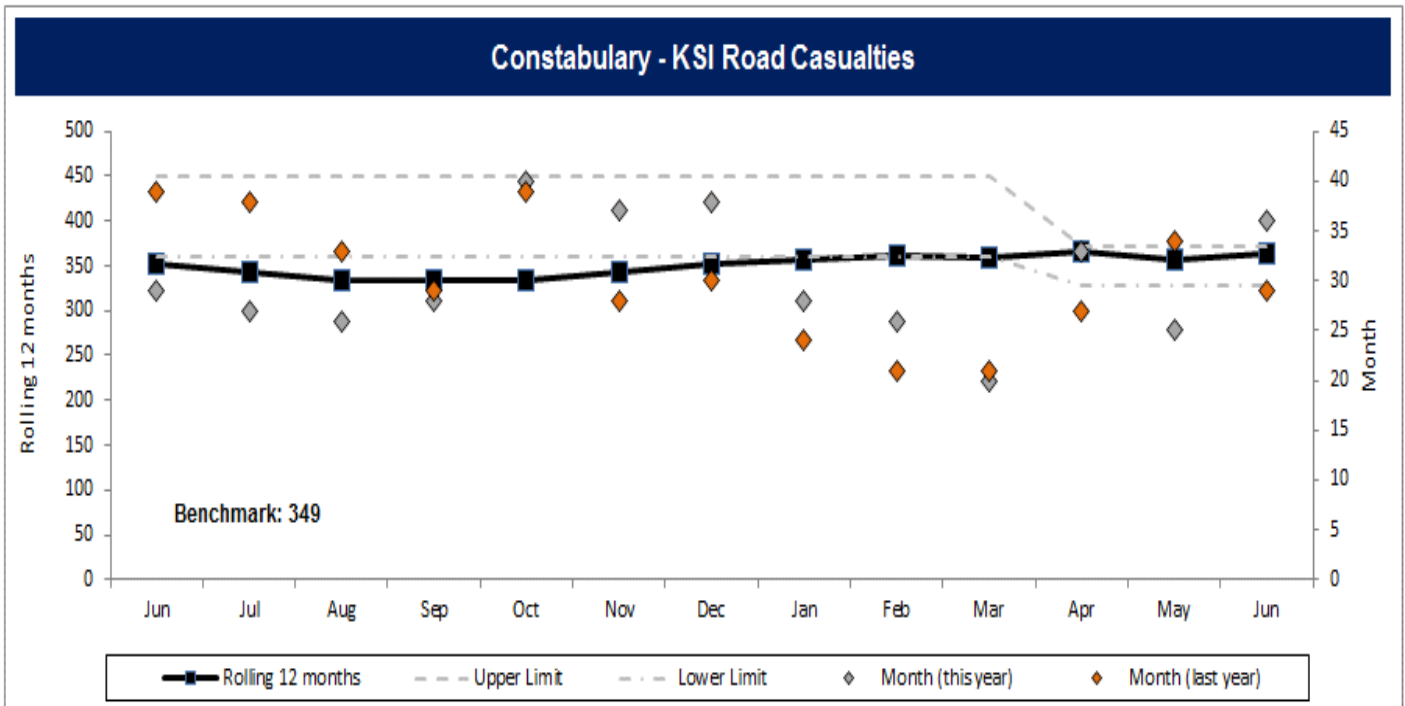
Rolling 12 months	Baseline	Perf v Benchmark	MSF
72.6%	85.4%	Lower	Comparable



Victim Satisfaction Survey data to December 2016

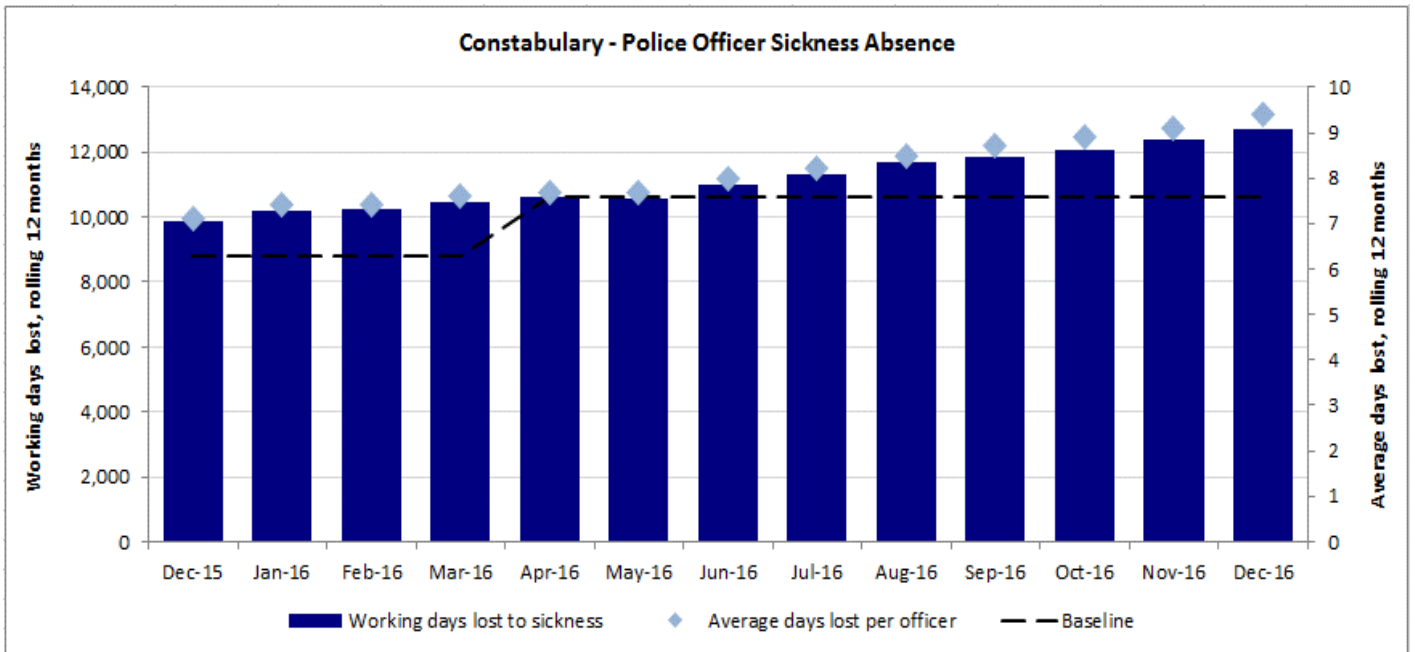
MAINTAIN THE RESILIENCE OF PROTECTIVE SERVICES

Jun-16	Jun-15	Jun-14	Jun-13	Current v 1yr avg	Current v 3yr avg	Rolling 12 months	Baseline	Perf v Benchmark	MSF
36	29	39	28	Comparable	Comparable	364	360	Comparable	Lower

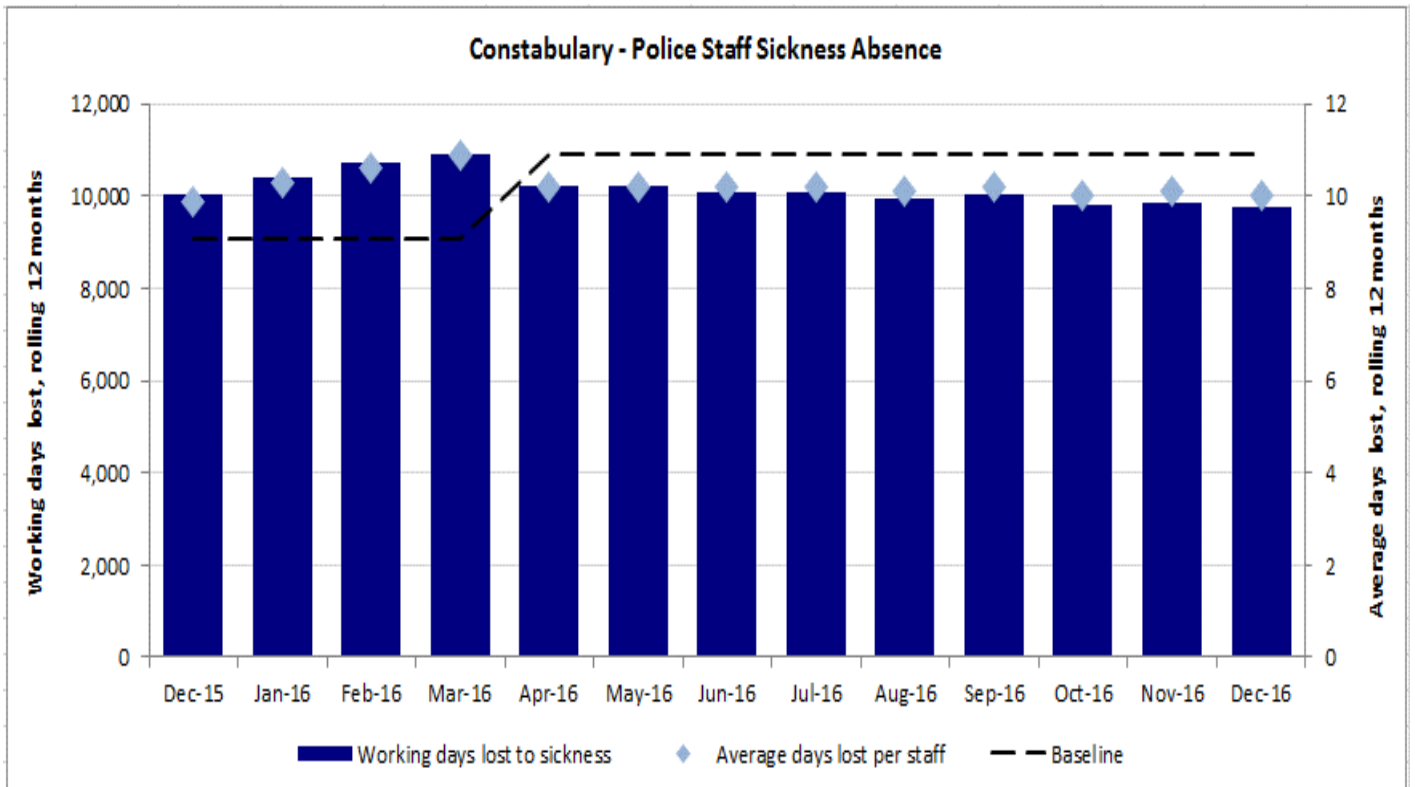


ORGANISATIONAL HEALTH

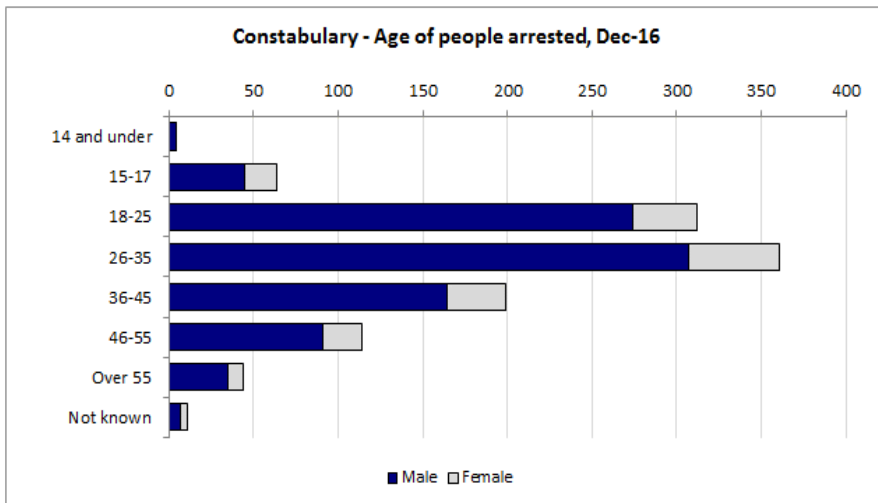
Current Month	Dec-15	Dec-14	Dec-13	Current v 1yr avg	Current v 3yr avg	Rolling 12 months	Baseline	Perf v Benchmark	MSF
0.9	0.7	0.6	0.6	Higher	Higher	9.4	7.6		Below national average



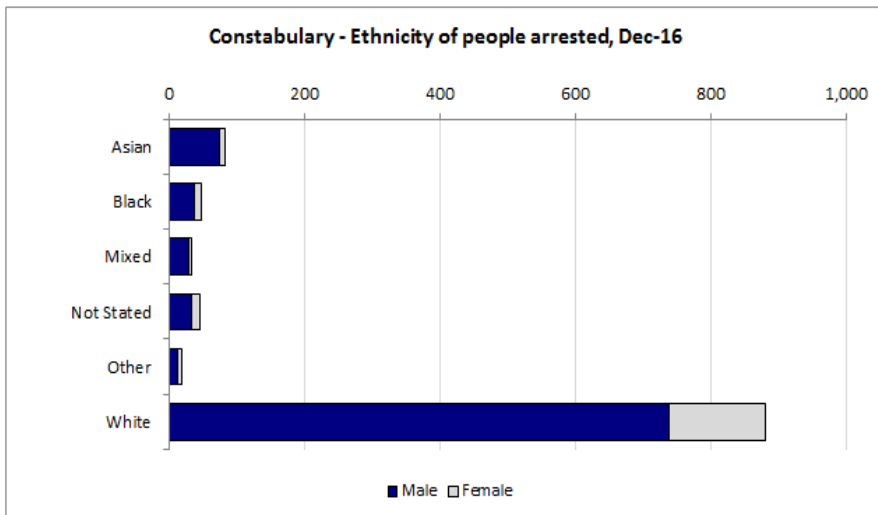
Current Month	Dec-15	Dec-14	Dec-13	Current v 1yr avg	Current v 3yr avg	Rolling 12 months	Baseline	Perf v Benchmark	MSF
0.9	1.1	1.0	0.6	Comparable	Higher	10.0	10.9		Above national average



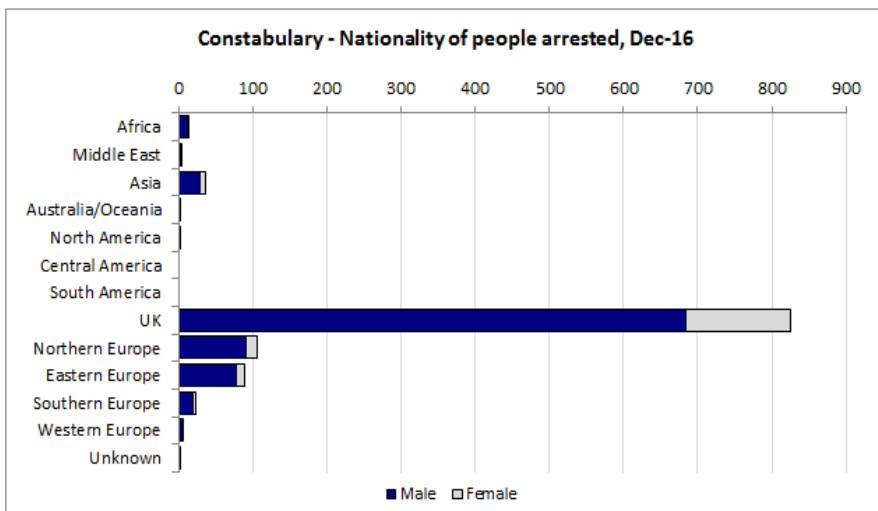
ARRESTS



SUMMARY - AGE		
	Dec-16	Rolling 12 *
14 and under	0.4%	1.3%
15-17	5.8%	6.4%
18-25	28.1%	26.7%
26-35	32.6%	30.7%
36-45	17.9%	19.8%
46-55	10.3%	9.7%
Over 55	4.0%	4.4%
Not known	1.0%	1.0%
TOTAL ARRESTS	1,109	13,370
Juveniles	6.1%	7.8%



SUMMARY - ETHNICITY		
	Dec-16	Rolling 12 *
Asian	7.5%	7.0%
Black	4.2%	5.7%
Mixed	3.0%	3.0%
Not Stated	4.1%	4.3%
Other	1.7%	1.7%
White	79.4%	78.3%
TOTAL ARRESTS	1,109	13,370

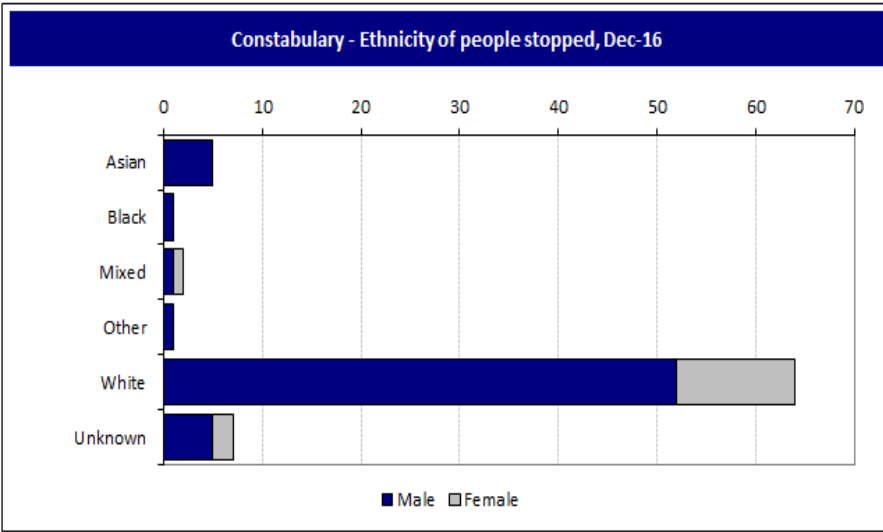


SUMMARY - NATIONALITY		
	Dec-16	Rolling 12 *
Africa	1.2%	2.2%
Middle East	0.4%	2.3%
Asia	3.2%	2.0%
Australia/Oceania	0.1%	0.1%
North America	0.2%	0.3%
Central America	0.0%	0.2%
South America	0.0%	0.1%
Total America	0.2%	0.5%
UK	74.4%	73.4%
Northern Europe	9.6%	9.9%
Eastern Europe	8.1%	7.0%
Southern Europe	2.1%	2.2%
Western Europe	0.6%	0.3%
Europe (excl UK)	20.4%	19.3%
Europe (incl UK)	94.8%	92.7%
Unknown	0.2%	0.1%

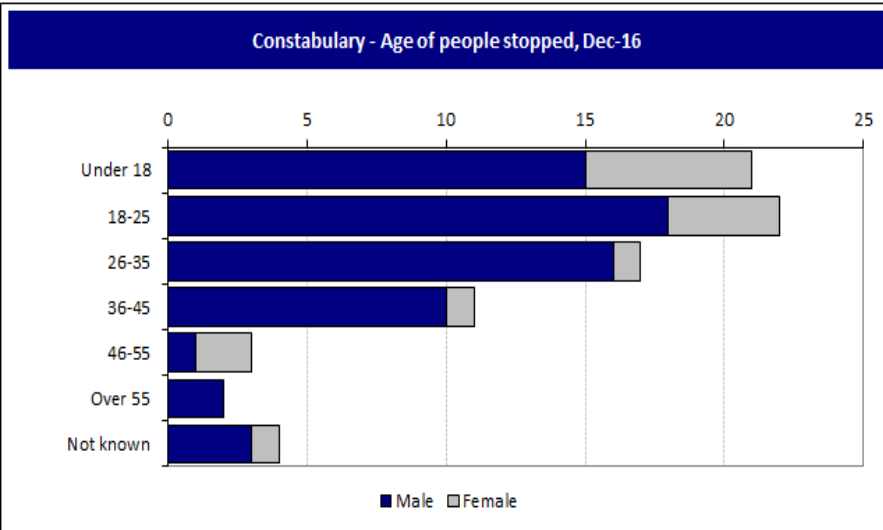
* Current rolling 12 months to December 2016

Data from NSPIS Custody

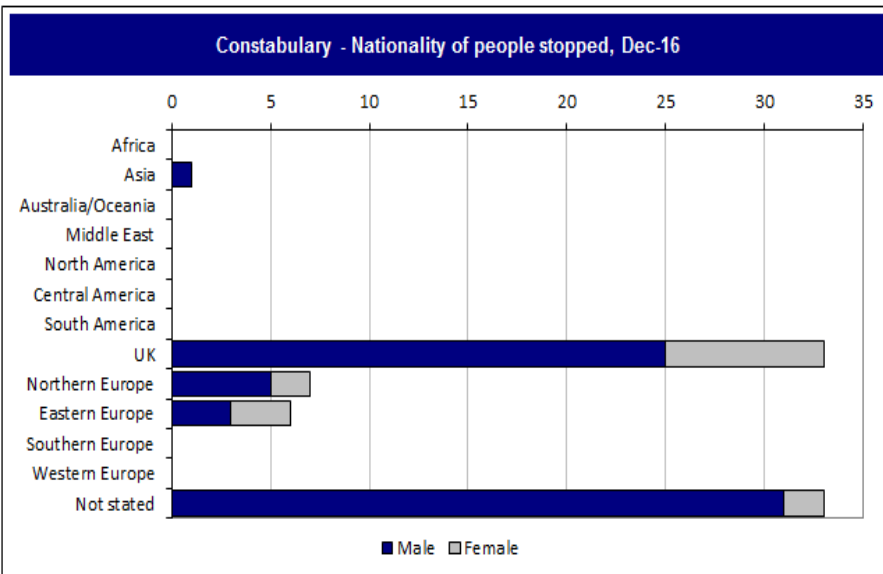
STOP SEARCHES



SUMMARY - ETHNICITY		
	Dec-16	Rolling 12
Asian	6.3%	6.7%
Black	1.3%	6.9%
Mixed	2.5%	3.2%
Other	1.3%	0.5%
White	80.0%	71.3%
Unknown	8.8%	11.4%
TOTAL	80	1,646



SUMMARY - AGE		
	Dec-16	Rolling 12
Under 18	26.3%	20.2%
18-25	27.5%	41.9%
26-35	21.3%	22.7%
36-45	13.8%	9.5%
46-55	3.8%	3.5%
Over 55	2.5%	0.9%
Not known	5.0%	1.4%
TOTAL	80	1,646



SUMMARY - NATIONALITY		
	Dec-16	Rolling 12
Africa	0.0%	1.0%
Asia	1.3%	1.3%
Australia/Oceania	0.0%	0.1%
Middle East	0.0%	0.4%
North America	0.0%	0.1%
Central America	0.0%	0.2%
South America	0.0%	0.1%
Total America	0.0%	0.3%
UK	41.3%	65.7%
Northern Europe	8.8%	5.3%
Eastern Europe	7.5%	7.7%
Southern Europe	0.0%	1.8%
Western Europe	0.0%	0.1%
Europe (excl UK)	16.3%	15.0%
Europe (incl UK)	57.5%	80.7%
Not stated	41.3%	16.2%

* Current rolling 12 months to December 2016

Data from Stop Search database

NOT PROTECTIVELY MARKED

INFORMATION SHEET

POLICE AND CRIME PLAN INDICATORS

	Indicator Name	Data used	Peer comparison data (iQuanta)
Maintain local police performance	Dealing with Local Concerns	Policing in Cambridgeshire survey data (conducted via telephone interviews). Data to December 2016	Data to June 2016
	Satisfaction with Service Delivery	Victim satisfaction surveys (conducted via telephone interviews). Data to December 2016	Data to September 2016
	Special Constabulary	Strength data from ORIGIN, hours worked from DutySheet. Data to December 2016	n/a
	999 calls answered	Call handling data. Data to December 2016	n/a
	Non emergency calls answered	Call handling data. Data to December 2016	n/a
Continue to tackle crime and disorder	All Recorded Crime	Police recorded crime. Data to December 2016	Data to November 2016
	All Crime Procecuton Possible Outcome Rate	Police recorded crime. Data to December 2016	Data to November 2016
	Victim-Based Crime	Police recorded crime. Data to December 2016	Data to November 2016
	Victim-Based Crime Procecuton Possible Outcome Rate	Police recorded crime. Data to December 2016	n/a
	Perception of high anti-social behaviour	Policing in Cambridgeshire survey data (conducted via telephone interviews). Data to December 2016	Data to June 2016
	Level of Anti-social behaviour	Police recorded incident data. Data to December 2016	n/a
	Robbery	Police recorded crime. Data to December 2016	Data to November 2016
	Satisfaction with Service Delivery - Burglary Dwelling	Victim satisfaction surveys (conducted via telephone interviews). Data to December 2016	Data to September 2016
	Burglary Dwelling	Police recorded crime. Data to December 2016	Data to November 2016
	Burglary Dwelling Procecuton Possible Outcome Rate	Police recorded crime. Data to December 2016	Data to November 2016
Perception of drug misuse	Policing in Cambridgeshire survey data (conducted via telephone interviews). Data to December 2016	Data to June 2016	
Keeping people safe	Domestic Abuse Crime	Police recorded crime. Data to December 2016	n/a
	Domestic Abuse Procecuton Possible Outcome Rate	Police recorded crime. Data to December 2016	n/a
	Repeat Incidents of Domestic Abuse Reviewed at MARAC	MARAC Data - Data to September 2016	n/a
	Hate Crime	Police recorded crime. Data to December 2016	n/a
	Hate Crime Procecuton Possible Outcome Rate	Police recorded crime. Data to December 2016	n/a
	Satisfaction with Service Delivery - Hate Incidents	Policing in Cambridgeshire survey data (conducted via telephone interviews). Data to December 2016	Data to September 2016
Maintain the resilience of protective services	KSI Road Casualties	Cambridgeshire County Council data to June 2016	Data to June 2016
Organisational Health	Police officers sickness absence rate	Sickness data from ORIGIN. Data to December 2016	Data to March 2016
	Police staff sickness absence rate	Sickness data from ORIGIN. Data to December 2016	Data to March 2016

OTHER PERFORMANCE INDICATORS

	Indicator Name	Data used	Peer comparison data (iQuanta)
Arrests	Age, ethnicity and nationality of detainees	Data from NSPIS Custody. Data to December 2016	n/a
Stop Search	Age and ethnicity of people stop searched	Data from Stop Search database and NSPIS Custody. Data to December 2016	n/a